



NEWINGTON  
LONDON

2 Bedrooms

Apartment

Located in London

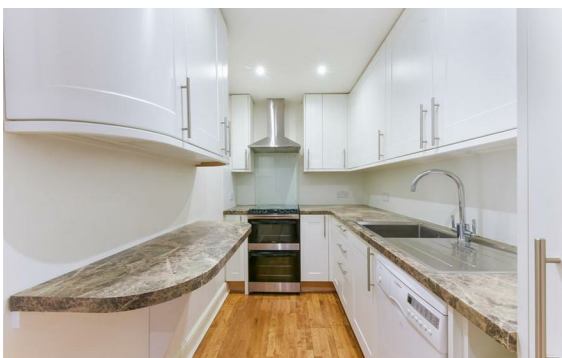
£850 Per Month



info@newingtonstates.com

<http://www.newingtonstates.com>

020 7724 2233



Newington Estates is delighted to introduce this Two bedroom apartment available to rent in Hyde Park Place, W2. This beautiful two bed apartment is within a stunning building with wooden flooring throughout. The accommodation comprises of a large open reception and dining area with large windows letting lots of natural light, a chic modern kitchen, two good sized bedrooms with ample storage.

With a perfect location and beautiful finish this is an amazing apartment is available to rent in March 2024.

### Energy Efficiency Rating:

Agents Note: Whilst every care has been taken to prepare these particulars, they are for guidance purposes only. All measurements are approximate and are for general guidance purposes only and whilst every care has been taken to ensure their accuracy, they should not be relied upon and potential buyers/tenants are advised to recheck the measurements.

# NEWINGTON LONDON

60 Upper Montagu Street

London

W1H 1SN

020 7724 2233

[info@newingtonestates.com](mailto:info@newingtonestates.com)

<http://www.newingtonestates.com>